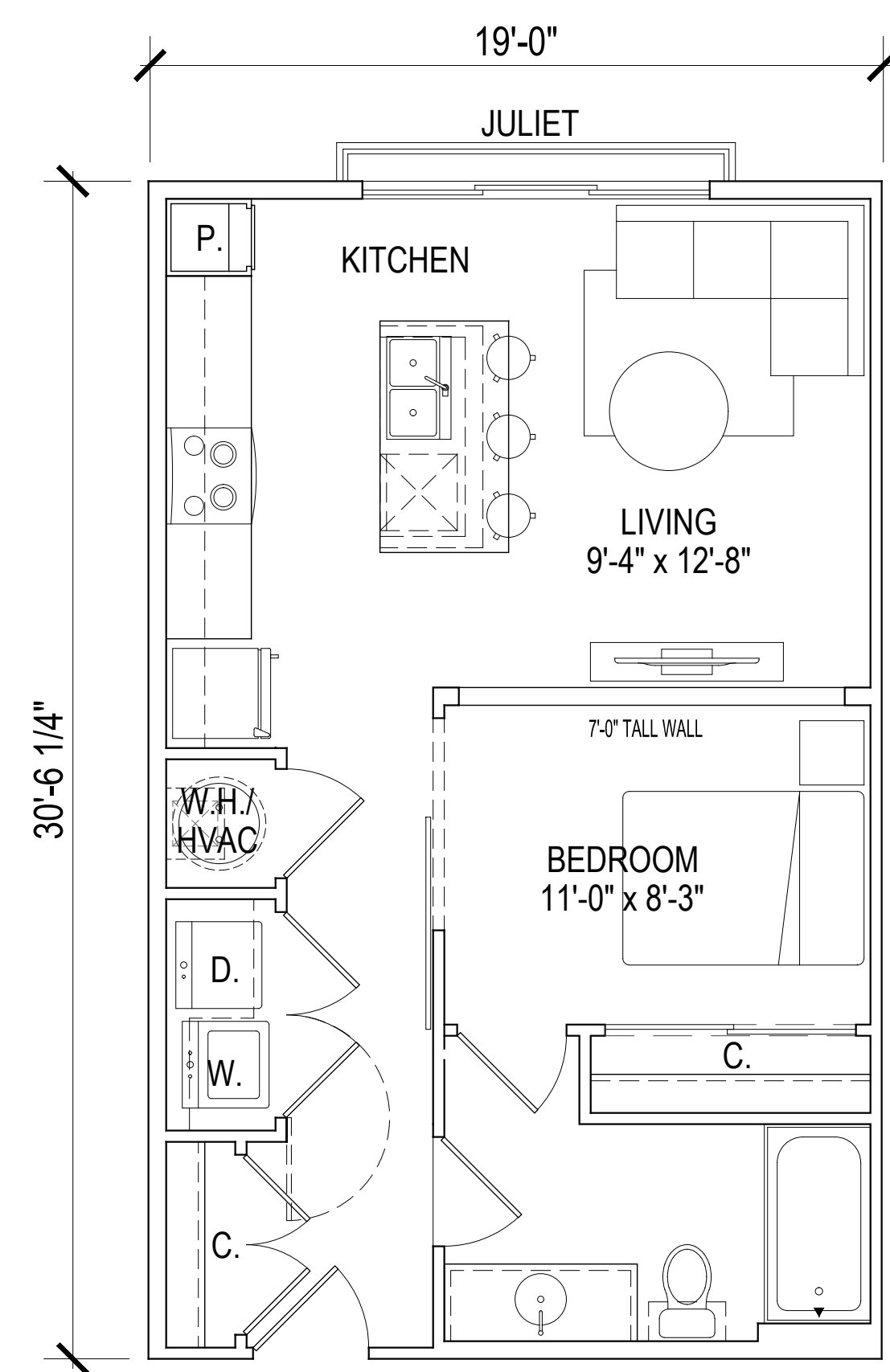


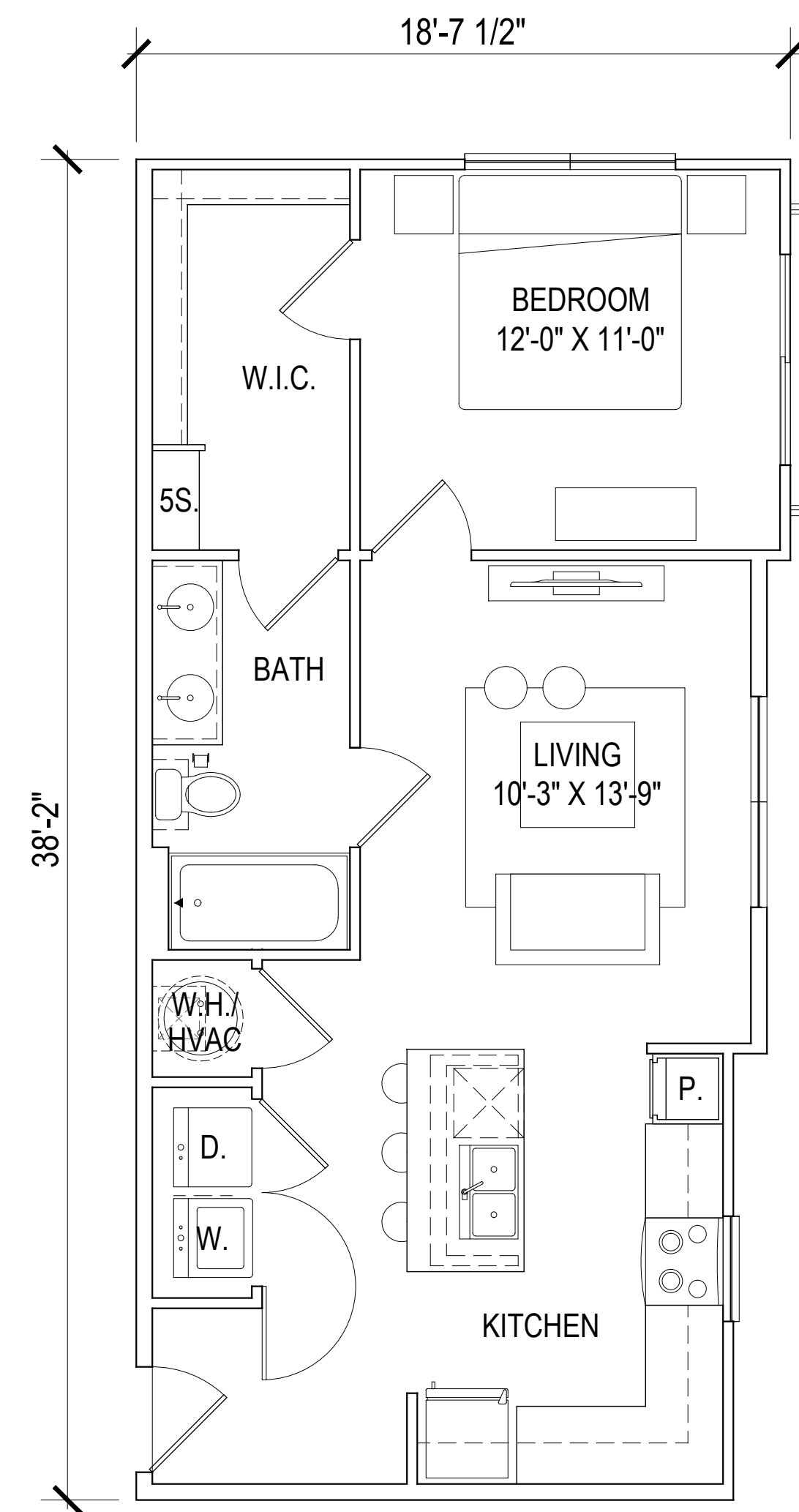
EL PASO SITE		EXXP CONSTRUCTION		2020105		
UNIT TABULATION - 3 STORY BREEZWAY (OPTION II)			3/26/21			
UNIT NAME	UNIT TYPE	NET AREA(SF)	UNIT COUNT	PERCENTAGE	TOTAL AREA	% BREAKDOWN
A1	studio	580	30	13%	17,400	13%
A2	1br/1ba	681	6	3%	4,086	35%
A3	1br/1ba	733	72	32%	52,776	
B1	1br/1ba	1,123	6	3%	6,738	48%
B2	2br/2ba	1,088	81	36%	88,128	
B4	2br/2ba	1,096	21	9%	23,016	4%
C1	3br/2ba	1,373	9	4%	12,357	
<b>TOTALS</b>			<b>225</b>	<b>100%</b>	<b>204,501</b>	<b>100%</b>
UNIT AVERAGE NET SF :				909		
* NET AREA IS COMPUTED TO INCLUDE SQUARE FOOTAGE FROM EXTERIOR FACE OF ALL EXTERIOR FRAME WALLS THAT ENCLOSE A/C SPACE. IT DOES NOT INCLUDE PATIOS, BALCONIES, PATIO/BALCONY STORAGE.						
<b>PROJECT DATA</b>						
UNIT AVERAGE NET SF :				909 S.F.		
ACREAGE:				8.28 GROSS ACRES		
DENSITY:				27 UNITS/ACRE		
RETAIL AREA				1.47 GROSS ACRES		
RETAIL PARKING				88 SURFACE SPACES		
<b>PARKING:</b>						
REQUIRED				393 SPACES		
PROVIDED				413 SPACES		
GARAGE PARKING				88 GARAGE SPACES (2 HC)		
SURFACE PARKING				325 SURFACE SPACES (7 HC)		
				1.84 SPACES/UNIT		



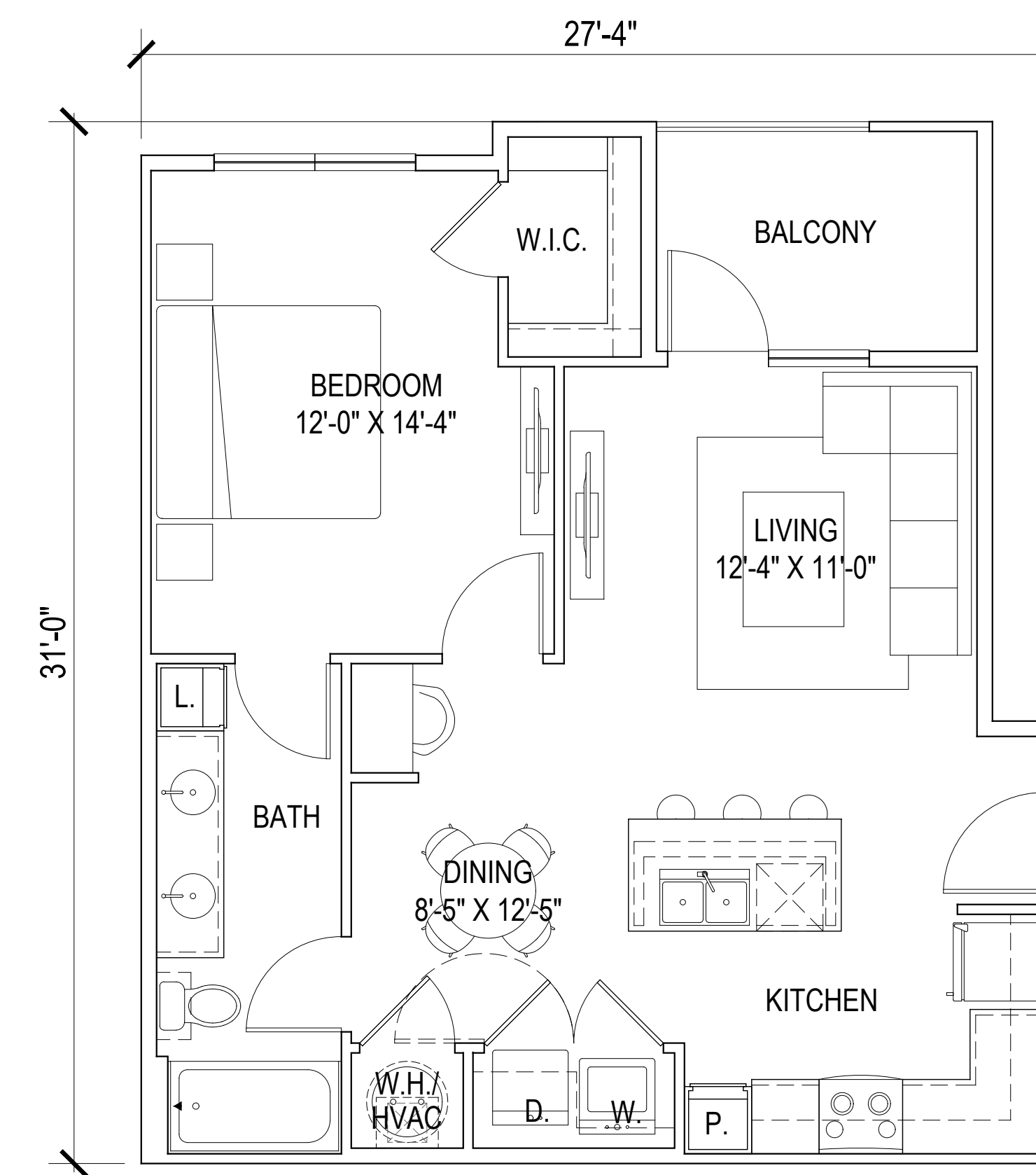
© 2020 by HUMPHREYS & PARTNERS ARCHITECTS, L.P. The arrangements depicted herein are the sole property of Humphreys & Partners Architects, LP and may not be reproduced in any form without its written permission. Architectural conceptual site plans are for feasibility purpose only. Revisions may occur due to further investigation from regulatory authorities and building code analysis. Dimensions shown are of a strategic intent only. Refer to surveys and civil drawings for technical information and measurements.



UNIT A1  
NET - 580 SQ. FT.

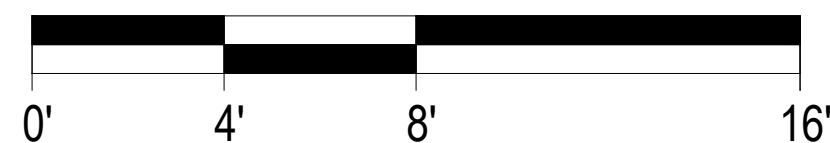


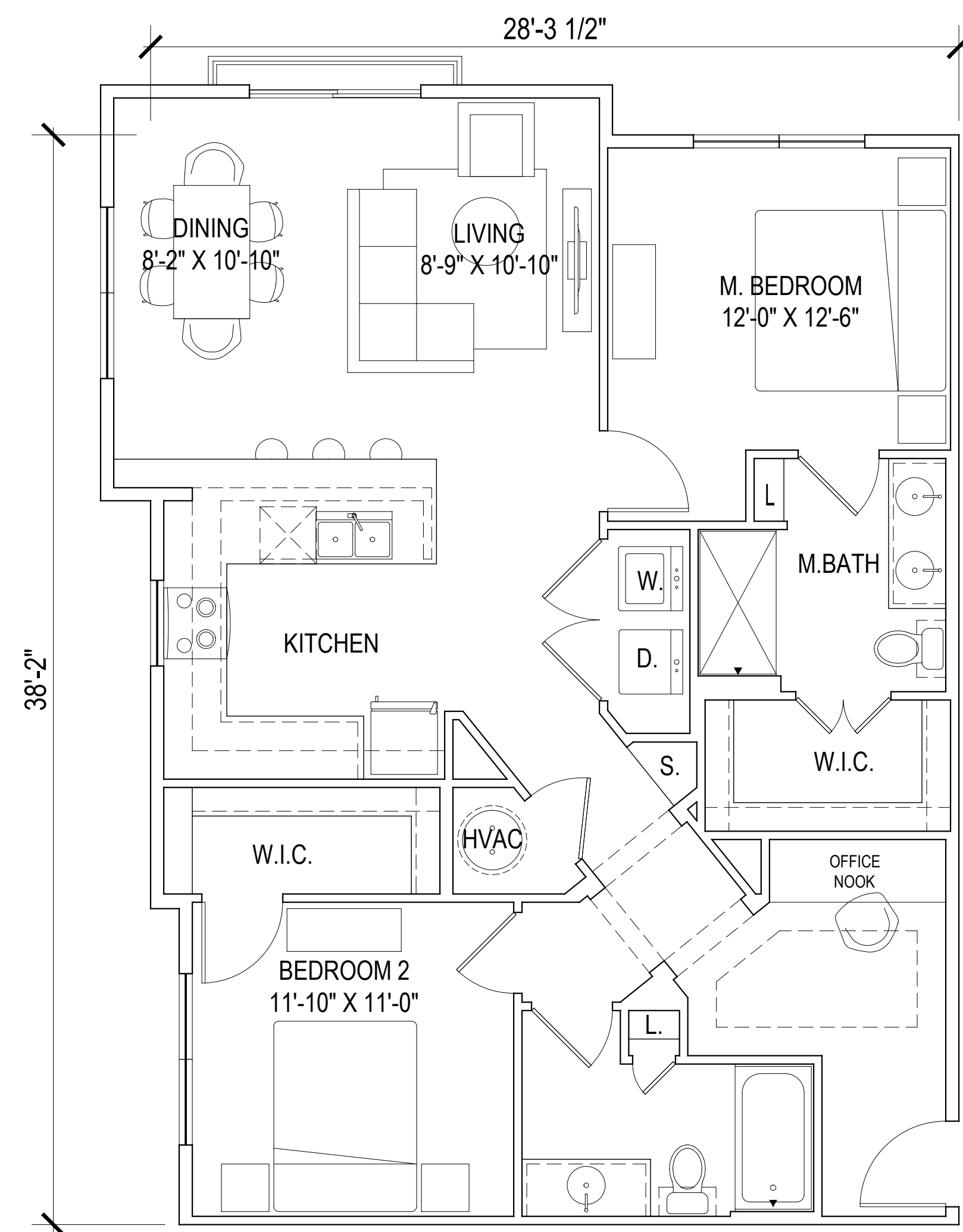
UNIT A2  
NET - 681 SQ. FT.



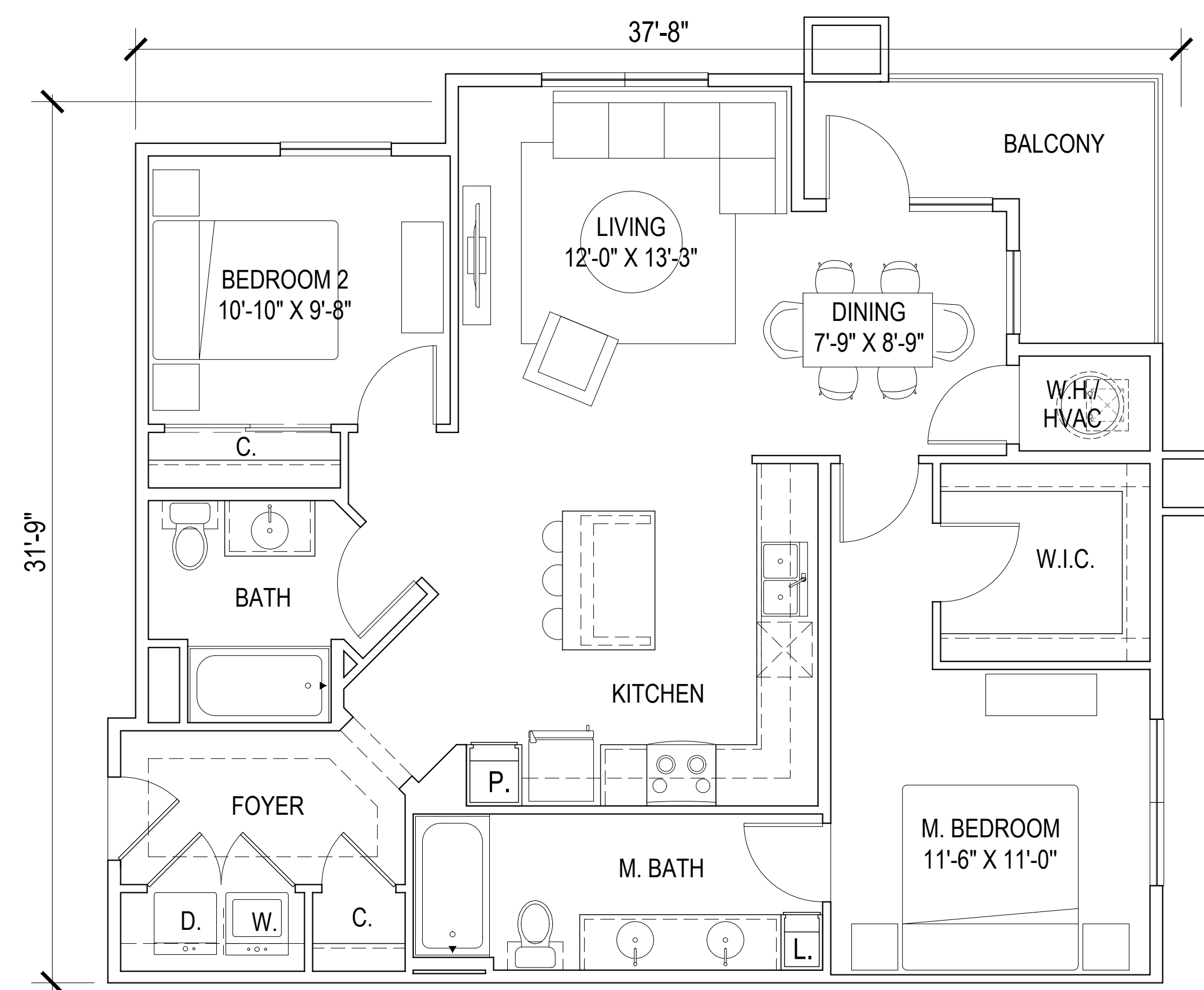
UNIT A3  
NET - 733 SQ. FT.

SCALE: 1/4" = 1'-0" (24"x36" SHEET)



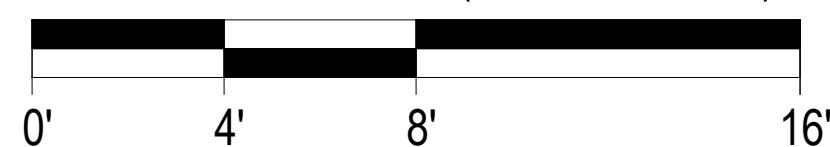


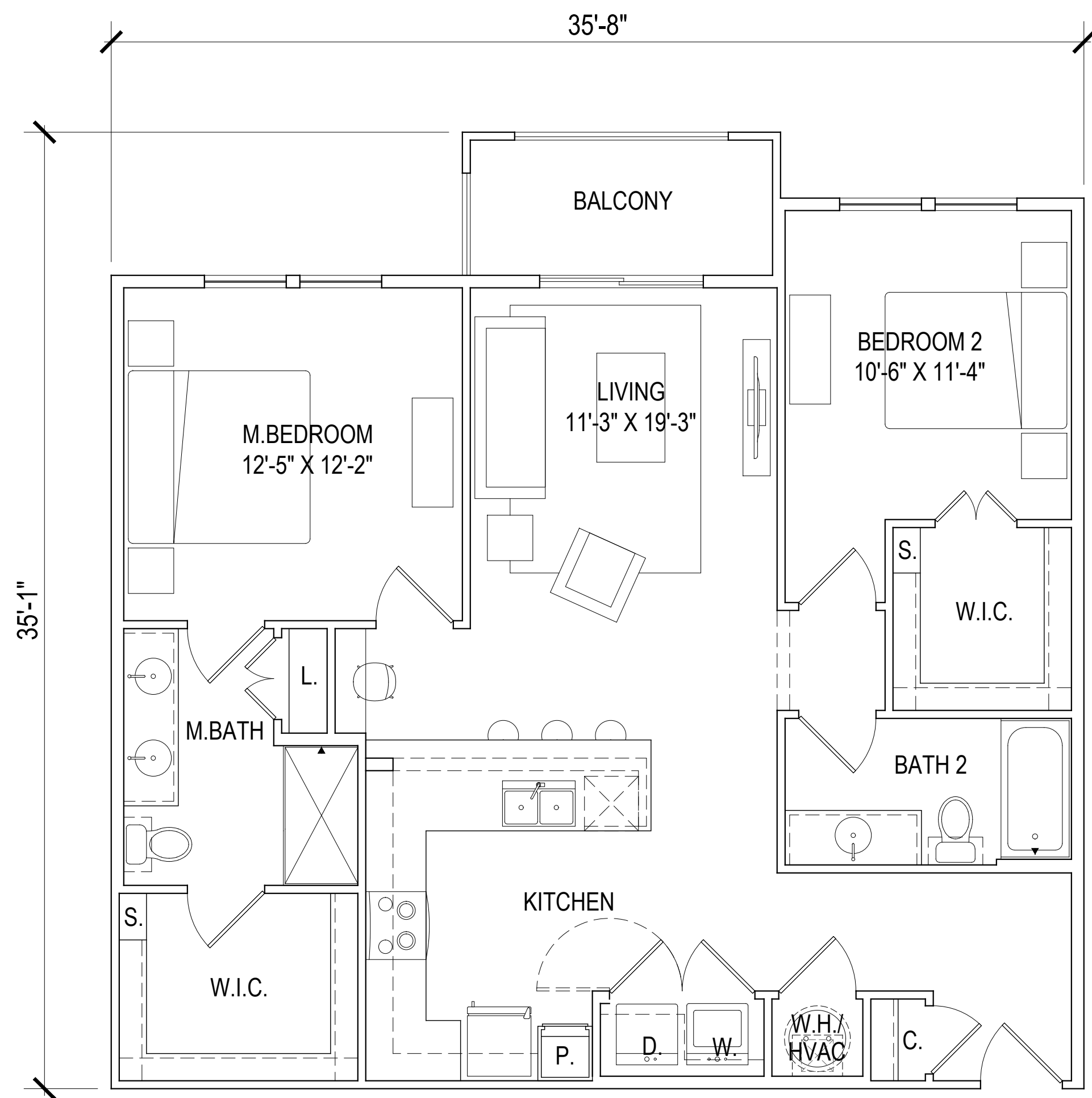
UNIT B1  
NET - 1123 SQ. FT.



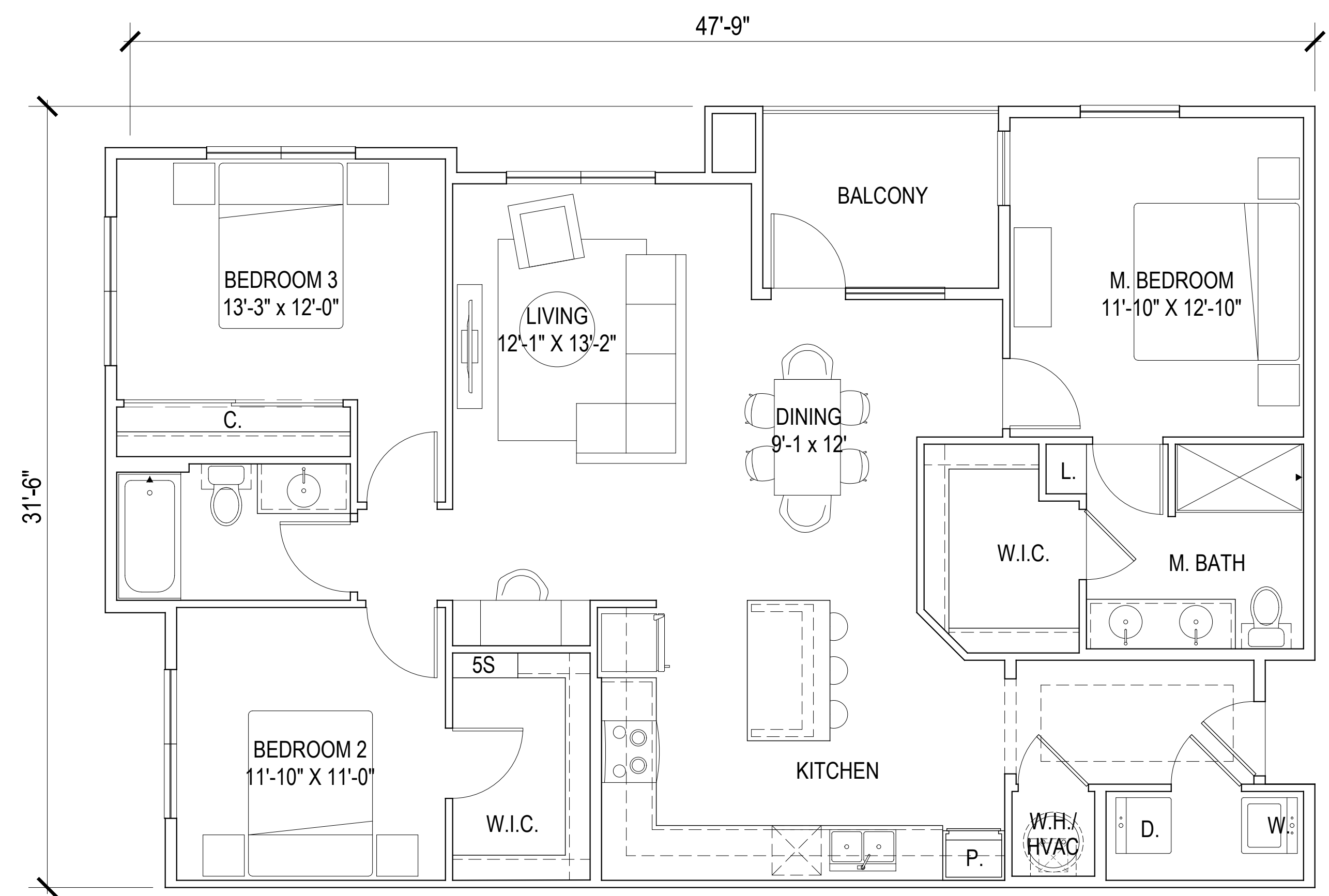
UNIT B2  
NET - 1088 SQ. FT.

SCALE: 1/4" = 1'-0" (24"x36" SHEET)





UNIT B4  
NET - 1096 SQ. FT.



UNIT C1  
NET - 1373 SQ. FT.

SCALE: 1/4" = 1'-0" (24"x36" SHEET)

